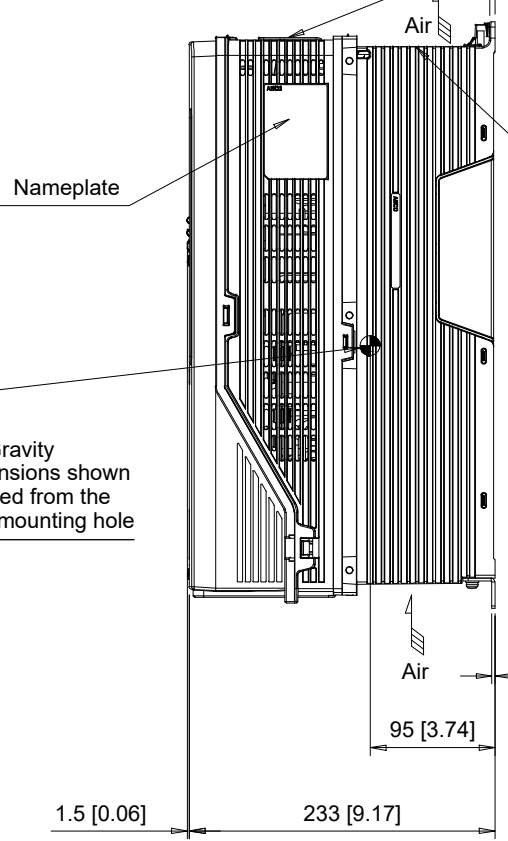
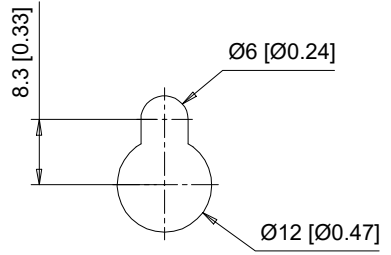


(4) Mounting Holes for M5 [#10] Screws. See Detail A for top mounting hole dimensions.

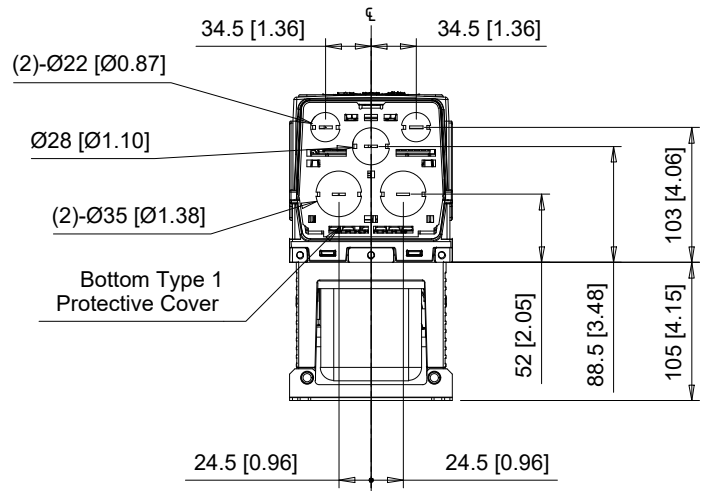
Top Type 1 Protective Cover  
 Note: Protective covers are factory installed to the top and bottom of the drive to meet UL Type 1 requirements. Remove these covers when operating the drive within a panel. Removing these covers results in an enclosure rating of IP20.



Center of Gravity  
 Note: Dimensions shown are measured from the bottom left mounting hole



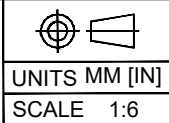
**Detail A**  
 Top mounting hole dimensions  
 Scale 1:1



C/C: FP65□	INPUT VOLTAGE 3-PHASE (VAC)	WEIGHT Kg (lb)		COOLING FANS
		STANDARD	WITH EMC FILTER	
2024□□□	200 TO 240	7.5 (16.5)	8.5 (18.7)	1
2031□□□		8.0 (17.6)	9.0 (19.8)	1
4021□□□		8.0 (17.6)	9.0 (19.8)	1
4027□□□	380 TO 480	9.0 (19.8)	10.0 (22.0)	1
4034□□□		10.0 (22.0)	11.0 (24.3)	1

□ denotes A-Z

**YASKAWA**



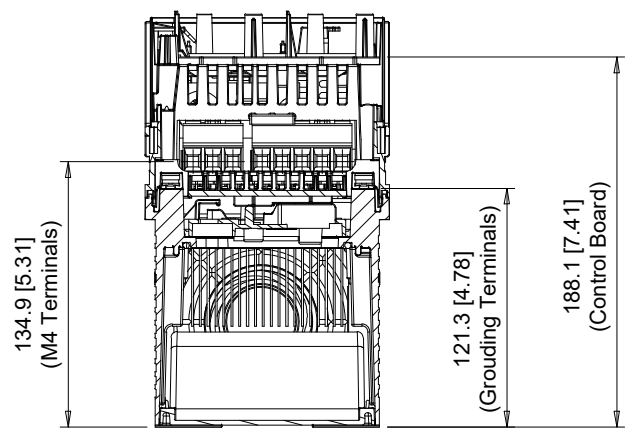
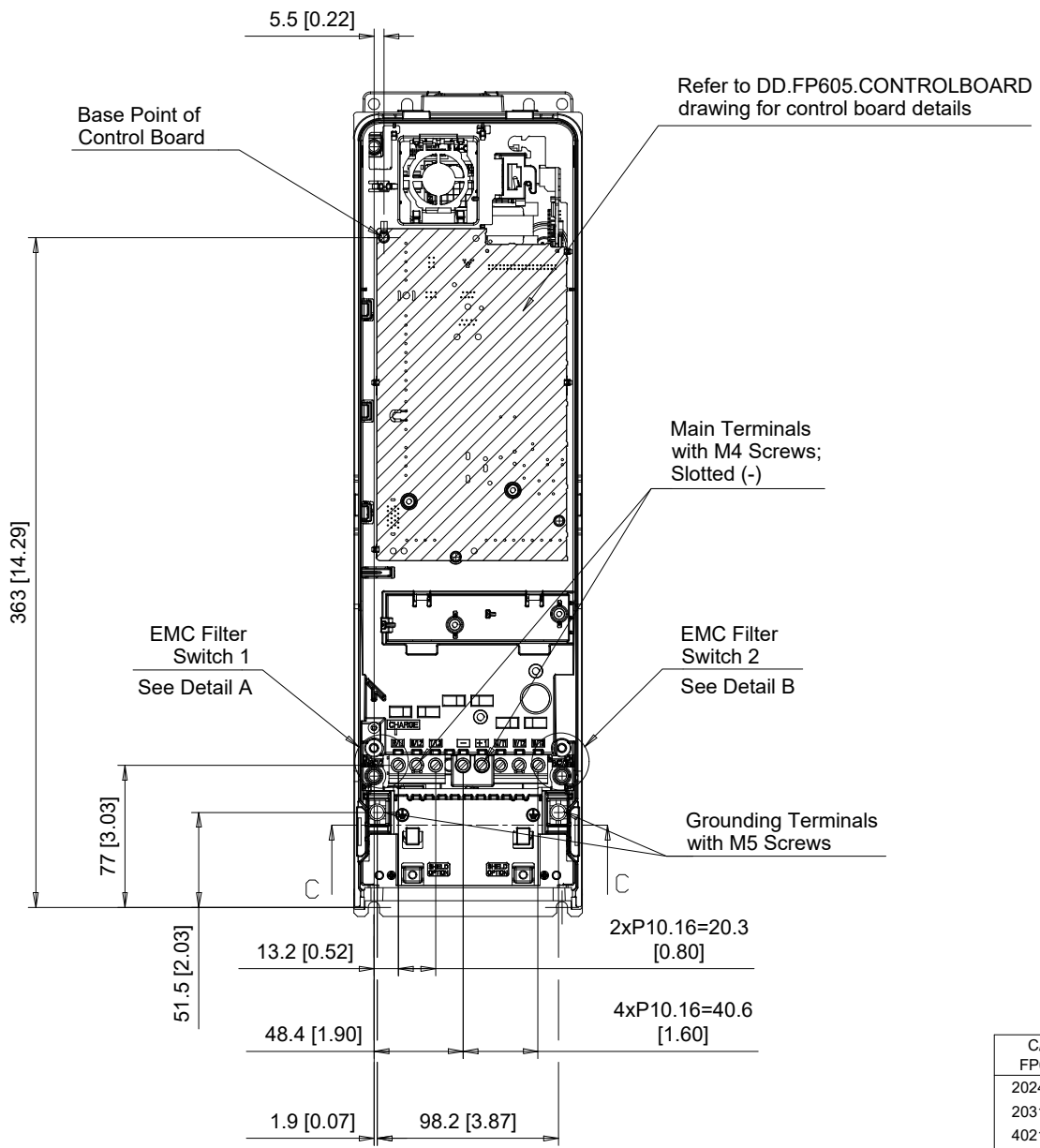
DRWN.	J. MATTAS	3-8-21
CHKD.	J. PIOTROWSKI	3-30-22
TECH.	L. UDDIN	4-16-22
APRV.	J. CAIRO	4-21-22

TITLE  
 FP605 DIMENSION DRAWING  
 FRAME SIZE 2  
 IP20/UL TYPE 1 ENCLOSURE

SIZE A PAGE 1 OF 3  
 DWG.NO. DD.FP605.FR2.T1

REV 0

A B C D E F G H I J



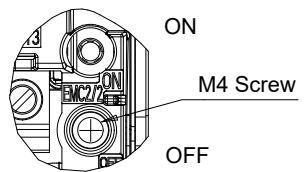
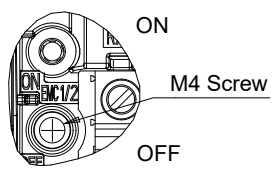
Section C-C

**EMC FILTER SWITCHES**

Note: EMC filter switches enabled only on models with built-in EMC filter

**EMC SW1**

**EMC SW2**



Detail A  
Scale 1:2

Detail B  
Scale 1:2

C/C: FP65□	TERMINAL SYMBOL	WIRE RANGE AWG (mm <sup>2</sup> )	TERMINAL SCREW	CLAMPING TORQUE N.m. (lb.in.)
2024□□□	R/L1, S/L2, T/L3	14 - 6 (2.5 - 16)	M4	1.7 (15)
2031□□□	U/T1, V/T2, W/T3	14 - 6 (2.5 - 16)	M4	1.7 (15)
4021□□□	-, +1	14 - 6 (2.5 - 16)	M4	1.7 (15)
4027□□□	⊕	14 - 8 (2.5 - 10)	M5	2.0 - 2.5 (18 - 22)
4034□□□				

□ Denotes A-Z

Note: Refer to applicable codes and standards for proper wire type and size.

**YASKAWA**

UNITS MM [IN]  
SCALE 1:4

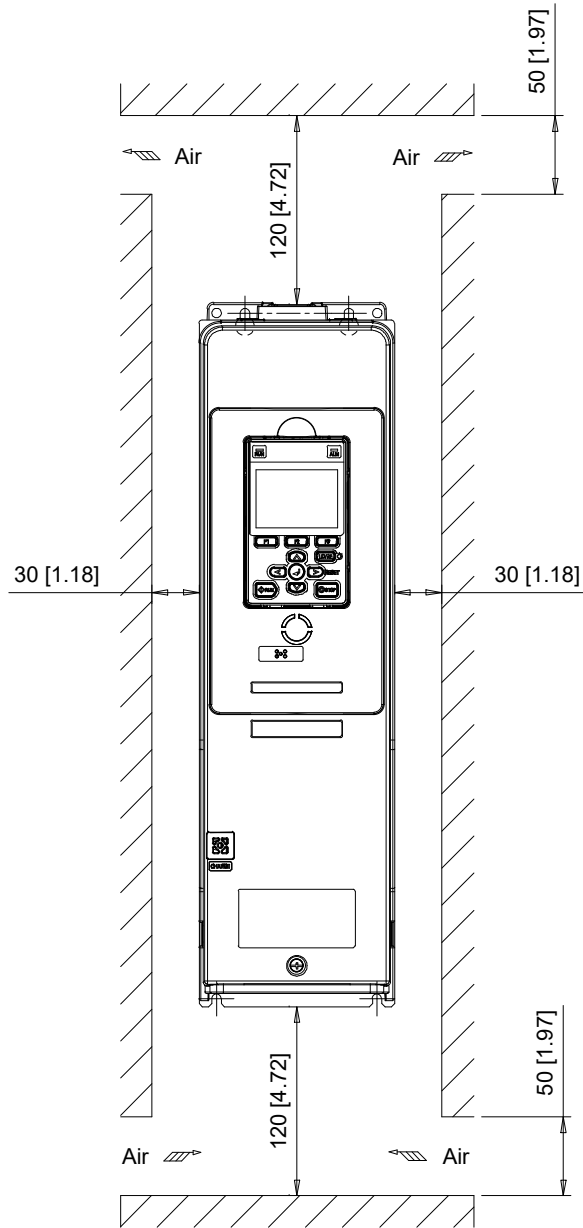
DRWN. J. MATTAS 3-8-21  
CHKD. J. PIOTROWSKI 3-30-22  
TECH. L. UDDIN 4-16-22  
APRV. J. CAIRO 4-21-22

TITLE  
FP605 DIMENSION DRAWING  
FRAME SIZE 2  
IP20/UL TYPE 1 ENCLOSURE

SIZE A PAGE 2 OF 3  
DWG.NO. DD.FP605.FR2.T1

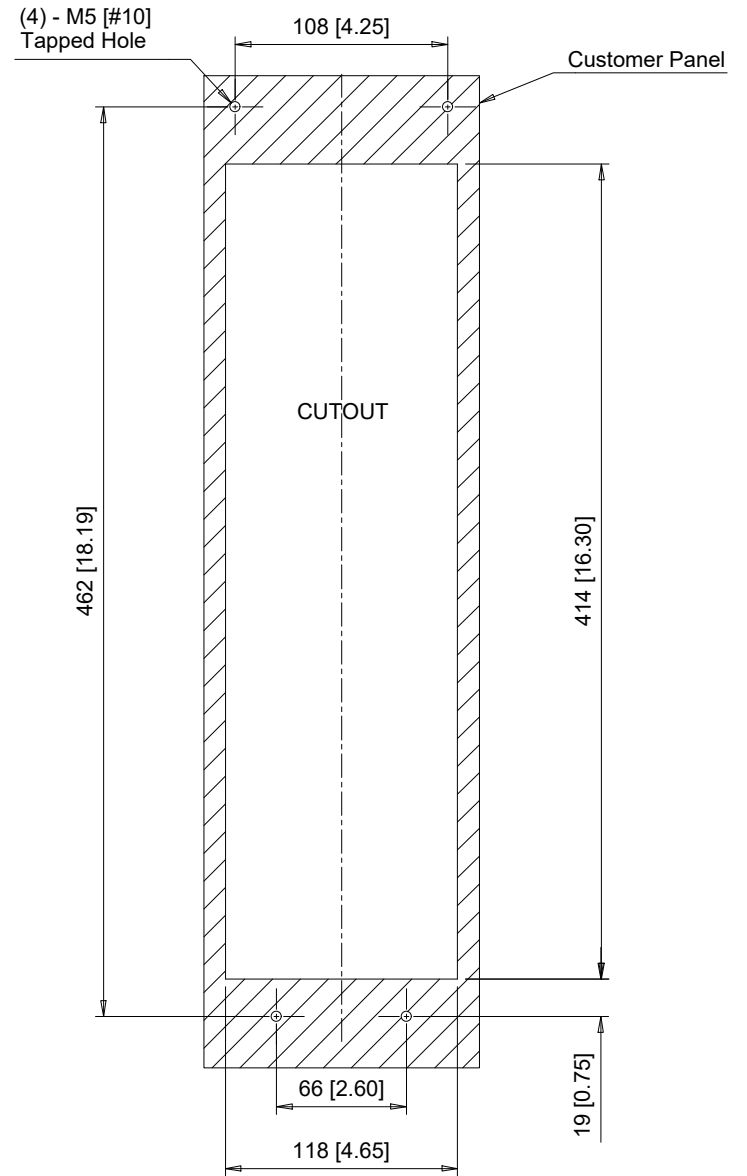
REV 0

Minimum Installation Clearances (Scale 1:5)



Note:  
For alternate mounting configurations, consult manual.

Panel Cutout (Scale 1:4)  
For External Heatsink Mounting Configuration



Notes:  
Exposed heatsink minimum clearance D = 110 [4.33].  
Refer to external heatsink instructions document for additional details.

**YASKAWA**

UNITS MM [IN]  
SCALE ABOVE

DRWN.	J. MATTAS	3-8-21
CHKD.	J. PIOTROWSKI	3-30-22
TECH.	L. UDDIN	4-16-22
APRV.	J. CAIRO	4-21-22

TITLE  
FP605 DIMENSION DRAWING  
FRAME SIZE 2  
IP20/UL TYPE 1 ENCLOSURE

SIZE A PAGE 3 OF 3  
DWG.NO.  
DD.FP605.FR2.T1

REV  
0